

PACE
UNIVERSITY

New York City / Westchester

**WHERE
EDUCATION
MEETS
OPPORTUNITY**



EXPERIENCE MORE.

PACE UNIVERSITY IS ALL ABOUT GETTING YOU WHERE YOU WANT TO GO. Small classes. Personal mentorship. Powerful academic support. A real-world, future-forward curriculum. And every opportunity to learn by doing—because experience matters.

You're going to expand your horizons beyond the classroom. You're going to be challenged. And we're going to help you succeed.

We're a community of people who go further and we want you to join us.

TOP 10%
of US colleges that
provide the best return
on tuition investment
—PayScale.com

100+
majors, minors, and
combined degree programs

TOP 10%
of the most Diverse
Colleges in America
—Niche.com

SEVEN SCHOOLS AND COLLEGES

- College of Health Professions
- Dyson College of Arts and Sciences
- Elisabeth Haub School of Law
- Lubin School of Business
- Sands College of Performing Arts
- School of Education
- Seidenberg School of Computer Science and Information Systems

MAJORS LIST 2024–2025

Westchester NYC	Westchester NYC
Accounting	• •
Accounting, Public (combined degree and CPA Prep)	• •
MBA in Public Accounting	• •
MS in Financial Management	• •
MS in Taxation	• •
Accounting, Public (five-year program and CPA Prep)	• •
Acting	• •
Acting for Film, Television, Voice-overs, and Commercials	• •
Applied Psychology and Human Relations	• •
Art	• •
Art History	• •
Behavioral Neuroscience	• •
Biochemistry	• •
Biological Psychology	• •
Biology	• •
Biology Pre-Professional	• •
Occupational Therapy	• •
Optometry	• •
Pharmacy	• •
Podiatry	• •
Business Analytics	• •
Business Economics	• •
Business Technology	• •
Chemistry	• •
Cinema and Filmmaking, Digital	• •
Commercial Dance	• •
Communication and Media Studies	• •
Communications	• •
Computational Economics	• •
Computer Science	• •
Criminal Justice	• •
Cybersecurity	• •
Directing	• •
Economics	• •
Education	• •
Adolescent Education	• •
Biology	• •
Chemistry	• •
English	• •
History/Social Studies	• •
Mathematics	• •
Spanish	• •
Childhood Education	• •
Early Childhood Education	• •
Early Childhood/Childhood Education	• •
English Language and Literature	• •
Environmental Science	• •
Environmental Studies	• •
Film and Screen Studies	• •
Finance	• •
Forensic Science	• •
Game Development	• •
General Business*	• •
Global Asia Studies	• •
Health Science	• •
History	• •
Information Systems	• •
Information Technology	• •
International Management	• •
Journalism, Digital	• •
Language, Culture, and World Trade	• •
Latin American Studies	• •
Latina/o Studies	• •
Liberal Studies*	• •
Management	• •
Arts and Entertainment Management	• •
Business Management	• •
Entrepreneurship	• •
Hospitality and Tourism Management	• •
Human Resources Management	• •
Marketing	• •
Advertising and Integrated Marketing Communications	• •
Digital Marketing	• •
Global Marketing Management	• •
Sports Marketing	• •
Mathematics	• •
Modern Languages and Cultures	• •
Musical Theater	• •
Nursing (four-year program)	• •
Peace and Justice Studies	• •
Personality and Social Psychology	• •
Philosophy and Religious Studies	• •
Political Science	• •
Production and Design for Stage and Screen	• •
Psychology	• •
Public Relations	• •
Sociology–Anthropology	• •
Spanish	• •
Stage Management	• •
Women's and Gender Studies	• •
Writing and Rhetoric	• •
Writing for Diversity and Equity in Theater and Media	• •

As of June 2024

* For transfer students only

40+ ACCELERATED COMBINED AND DUAL DEGREES (FIVE- AND SIX-YEAR PROGRAMS)

Earn both a bachelor's and a graduate degree in a shortened time frame.

www.pace.edu/accelerate

PFORZHEIMER HONORS COLLEGE

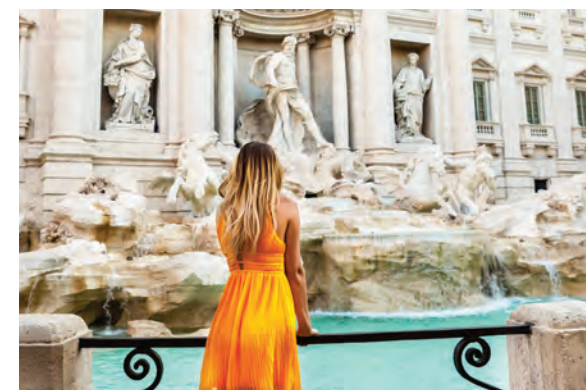
Exclusive benefits include innovative courses, early registration, mentoring, events, research and study abroad grants, top-tier annual scholarship, and more. Students are reviewed during admission—no separate application is required.

www.pace.edu/honors

STUDY ABROAD

Whether you want to spend a semester at one of our global partner schools or take a weeklong faculty-led travel course, Pace provides the support and affordable programs to get you there.

www.pace.edu/abroad



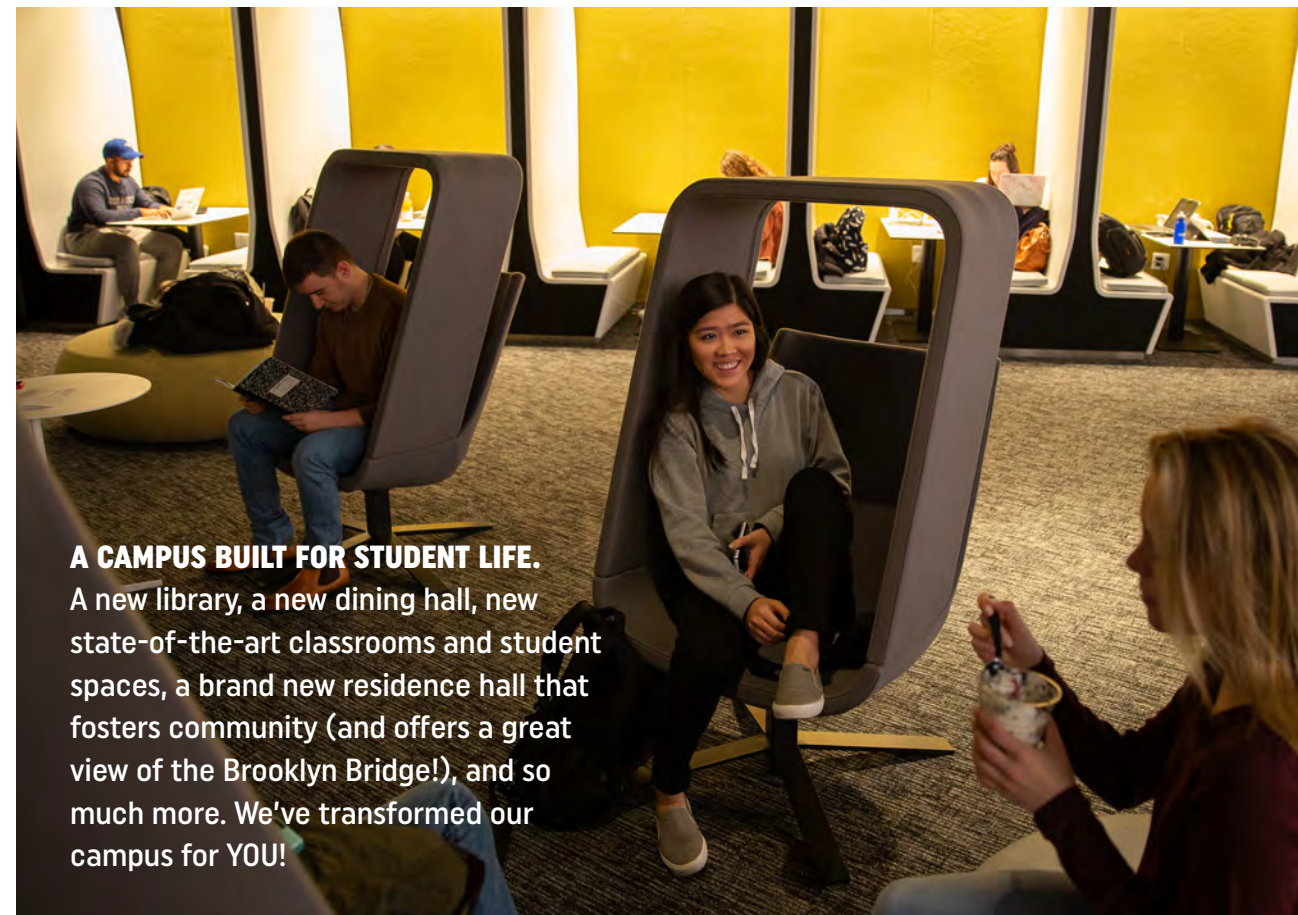
To learn about these programs, visit: www.pace.edu/academics

NEW YORK CITY CAMPUS



THE CITY IS YOUR CLASSROOM. At Pace, learning extends beyond the classroom walls. With dedicated professors and the Big Apple as your backdrop, you can achieve anything. Explore finance at the stock exchange, engage in diplomacy at the UN, participate in hackathons at Google. The opportunities are endless.

THE CITY IS YOUR CAMPUS. The iconic skyline right outside your window and the hustle and bustle on the streets below. That's your campus. From Chinatown to Central Park, you could spend the next four years exploring NYC and never have the same experience twice.



A CAMPUS BUILT FOR STUDENT LIFE.

A new library, a new dining hall, new state-of-the-art classrooms and student spaces, a brand new residence hall that fosters community (and offers a great view of the Brooklyn Bridge!), and so much more. We've transformed our campus for YOU!



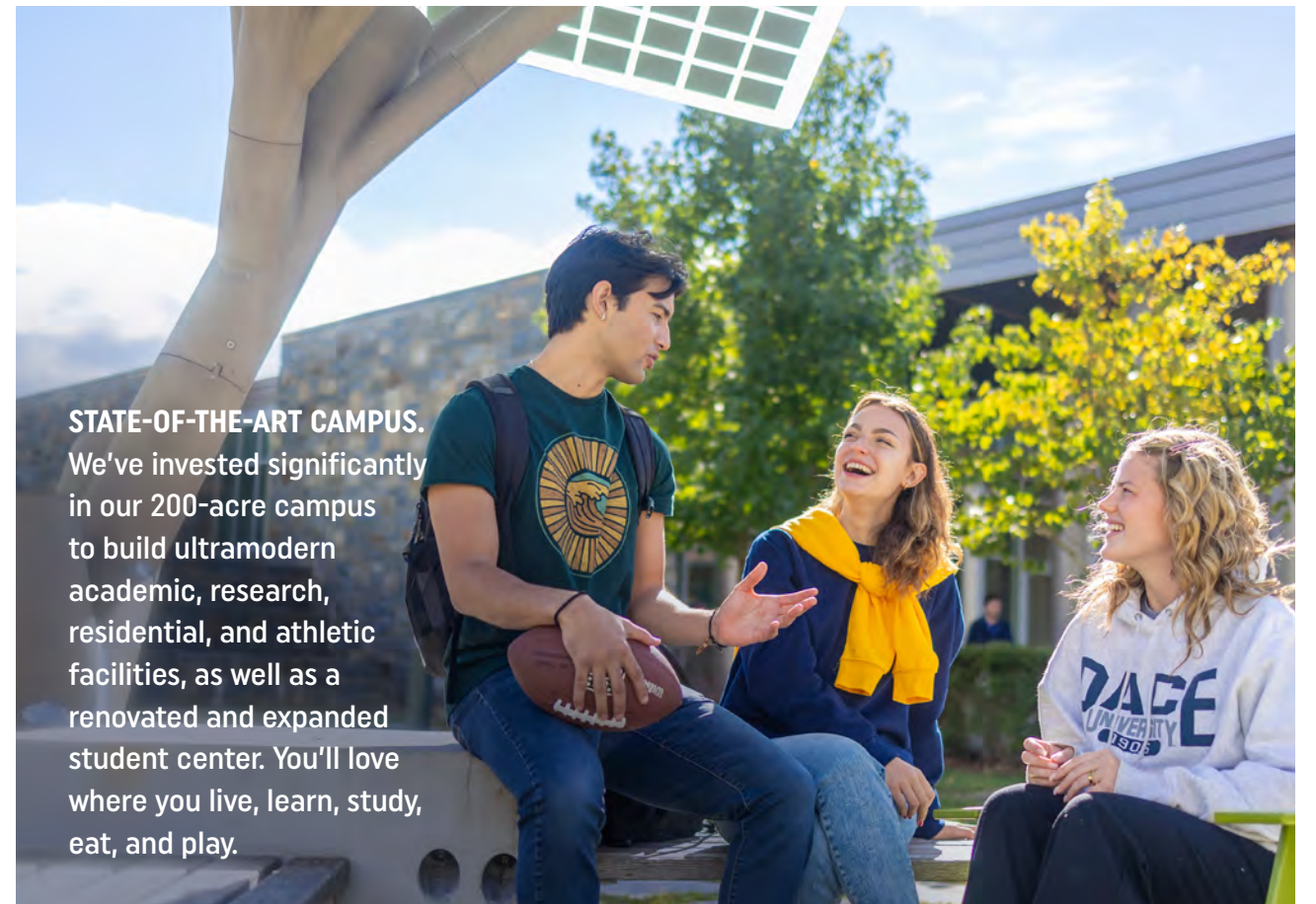
Learn more about city living at www.pace.edu/NYC.

WESTCHESTER CAMPUS



VIBRANT AND DIVERSE CAMPUS LIFE. If you're looking for a close-knit community and an active campus with NCAA Division II Northeast-10 sports teams and 60+ student clubs and organizations including Greek life, you've come to the right Pace campus.

Learn more about our suburban campus
at www.pace.edu/westchester.



STATE-OF-THE-ART CAMPUS. We've invested significantly in our 200-acre campus to build ultramodern academic, research, residential, and athletic facilities, as well as a renovated and expanded student center. You'll love where you live, learn, study, eat, and play.



OPPORTUNITY IS CLOSE BY. Internship possibilities abound, with Fortune 500 companies such as IBM, NBC Sports, and MasterCard operating alongside emerging start-ups.

HUGO BOSS

PACE GETS JOBS

STUDENTS COME TO PACE TO REACH THEIR FULLEST POTENTIAL. Career Services is here to help. We've got the tools, employer relationships, and in-house career experts you'll need to get you the job or internship you've dreamed of.

WHO HIRES PACE STUDENTS?

- Amazon
- Cisco
- Citibank
- CNN
- Dannon
- Deloitte
- EY
- J.P. Morgan
- Live Nation
- Entertainment
- Morgan Stanley
- NYC Health + Hospitals
- PwC
- Saturday Night Live
- Sony Music Entertainment
- US Department of Homeland Security
- United Nations
- Warner Bros. Discovery
- Westchester Medical Center
- Whitney Museum of American Art

To learn more about Career Services at Pace, visit: www.pace.edu/careerprep



9,000+
internships, co-ops, practicums, field experiences, and clinicals completed by students last year

94%
graduates from the Class of 2023 are employed, continuing their education, or pursuing service

\$74,885
starting salary for Class of 2023 bachelor's graduates



"THIS INTERNSHIP PROMISES TO BE A TRANSFORMATIVE EXPERIENCE, fostering personal and professional growth and I'm excited for all the new opportunities coming my way."

— DREW KNOTTS
Media Relations and Publicity Intern
Warner Bros. Discovery

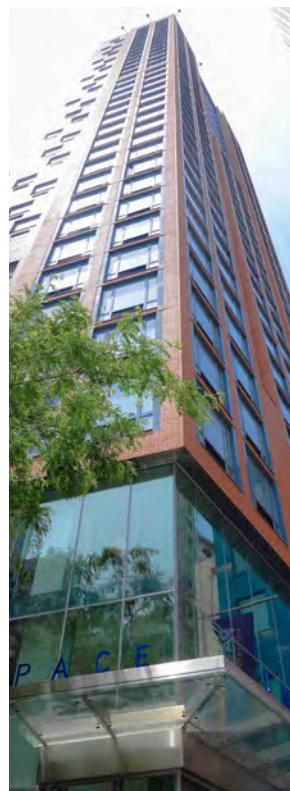
STUDENT LIFE 101

GRAB YOUR NEW FRIENDS AND LET'S GO. From Broadway shows, to Yankees games, drag queen BINGO, self-care days around exam season, movie nights, hiking trips, concerts (in recent years we've had Lola Brooke, 41, and Maggie Lindemann), speaker events—you name it, and we do it.



1,600+
events per
semester

100+
student clubs
and orgs



34 stories

makes 33 Beekman the tallest residence hall
in the world.

10
residence halls

3,700+
student live on campus

75%
of all first-year students
live on campus

LIVING ON CAMPUS. Choose from diverse housing options, themed floors, and tailored programming in NYC or Westchester. Singles, doubles, triples, and townhouses—get a taste of the “suite” life at www.pace.edu/housing.

ATHLETICS

NCAA Division II Northeast-10

MEN'S SPORTS*: Baseball, Basketball, Cross Country, Football, Lacrosse, Swimming and Diving

WOMEN'S SPORTS*: Basketball, Cross Country, Field Hockey, Lacrosse, Soccer, Softball, Swimming and Diving, Volleyball

SPIRIT SQUAD*: Cheerleading, Dance Team, Pep Band

ESPORTS: Varsity, academy, and club opportunities for students in *League of Legends*, *Valorant*, *Super Smash Bros Ultimate*, *Rocket League*, *Overwatch*, and *Fortnite*.



Interested in joining the team?
Scan this now.

*Westchester Campus only



FINANCING YOUR PACE EDUCATION

A PACE EDUCATION IS MORE AFFORDABLE THAN YOU THINK. At Pace, our goal is to offer you as much financial assistance as possible, based upon availability and need. All admitted students are considered for every available option. Financial aid resources include scholarships, grants, on-campus employment, and loans.

APPLY FOR TUITION ASSISTANCE WITH FAFSA

To be considered for full financial aid, you must complete the Free Application for Federal Student Aid (FAFSA) at fafsa.gov.

Estimate your financial aid package:*
www.pace.edu/calculator

98%

of first-year students receive financial aid

\$13,500–

\$31,000

range of merit-based scholarships

\$27,971

average amount of Pace aid offered to all new undergraduate students each year



*The federal government requires colleges and universities to post a net price calculator on their websites. No FAFSA required to receive merit award. Pace University reserves the right to change tuition rates.

APPLICATION CHECKLIST

FIRST-YEAR APPLICANTS

- Application for admission
- Official high school transcripts
- Personal statement/essay
- Two letters of recommendation
- Optional official SAT/ACT score report*
- For International Applicants: Proof of English Language Proficiency†
- \$50 application fee

TRANSFER APPLICANTS

- Application for admission
- Official college transcripts
- For International Applicants: Proof of Language Proficiency†

* To learn more, visit www.pace.edu/TestOptional.

† To learn more, visit www.pace.edu/intapp.

IMPORTANT DATES TO REMEMBER

	Early Decision	Early Action I	Early Action II	Sands College of Performing Arts*	Regular Decision
Application Deadline	11/1	11/15	12/1	12/1	2/15
Admission Decision Notification	11/21	12/1	1/3	Beginning 3/31	Beginning 1/3
Deposit Deadline	2/15	5/1	5/1	5/1	5/1

February 15
Deadline for filing the FAFSA for \$1,000 scholarship

Already applied? Check the status of your application:
www.pace.edu/appdashboard.

* For application and audition requirements, visit performingarts.pace.edu

Apply today at
www.pace.edu/apply.





Office of Undergraduate Admission

undergradadmission@pace.edu

NEW YORK CITY CAMPUS

One Pace Plaza
New York, NY 10038
(212) 346-1323

WESTCHESTER CAMPUS

861 Bedford Road
Pleasantville, NY 10570
(914) 773-3746

PACE UNIVERSITY

Plan your visit today at www.pace.edu/explore.



@PaceUniversity
#PaceBound