

A man in a dark suit and tie is lying face down on a paved road at night. The scene is dimly lit, with a yellow double line visible on the road surface. In the background, there are streetlights and some buildings under a dark sky.

Strong Towns: A Bottom-Up Revolution to Rebuild American Prosperity

CHRIS ALLEN | @STRONGTOWNS |
WWW.STRONGTOWNS.ORG

What is Strong Towns?

- We seek to replace America's post-war pattern of development, the Suburban Experiment, with a pattern of development that is financially strong and resilient.
- We advocate for cities of all sizes to be safe, livable, and inviting.
- We work to elevate local government to be the highest level of collaboration for people working together in a place, not merely the lowest level in a hierarchy of governments.
- How do we do this?
 - Our articles.
 - Our podcasts.
 - Our Local Conversations and Membership.
 - Our coaching for cities and technical staff.

Strong Towns 5 Core Campaigns

- End Highway Expansion
- Transparent Local Accounting
- Incremental Housing
- Safe and Productive Streets
- End Parking Mandates and Subsidies

How Do We Do This?

- Our articles.
- Our podcasts.
- Our Local Conversations and Membership.
- Our coaching for cities and technical staff.

1870



1905



1928



1878



1898



1911



1918







Complex, Adaptive Systems





Complex



Complicated



Complex



Complicated

1870



1905

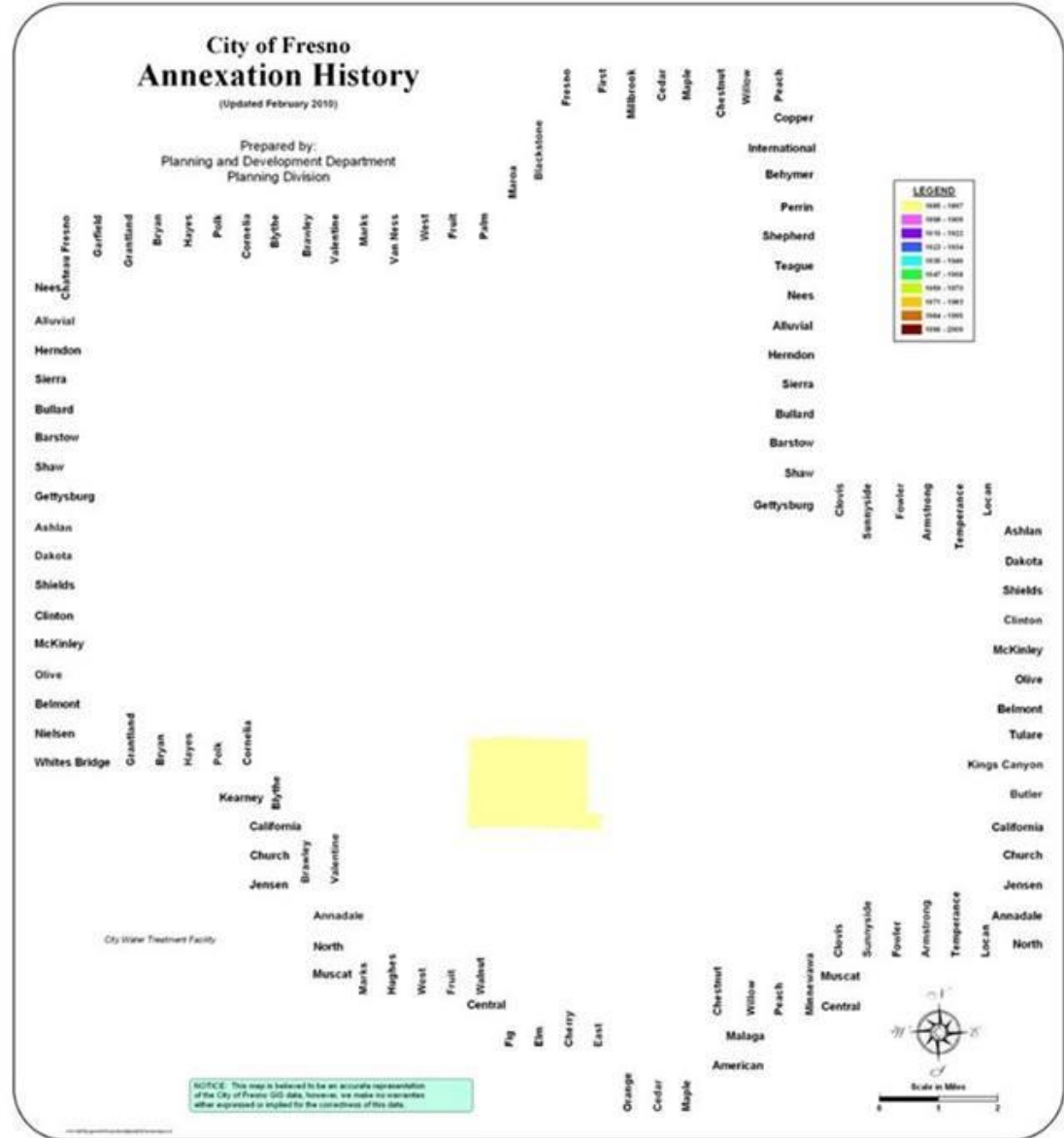


1928

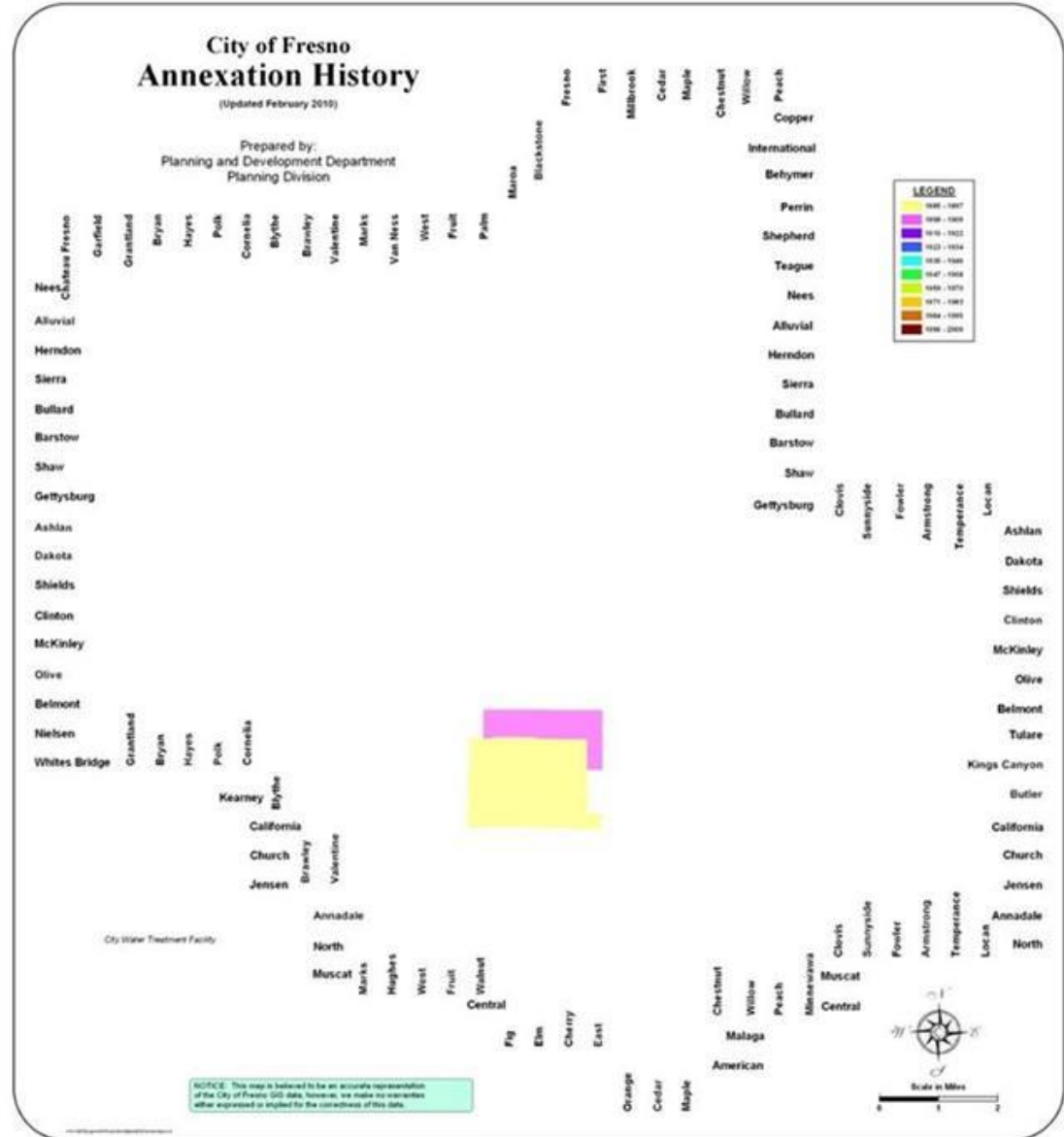




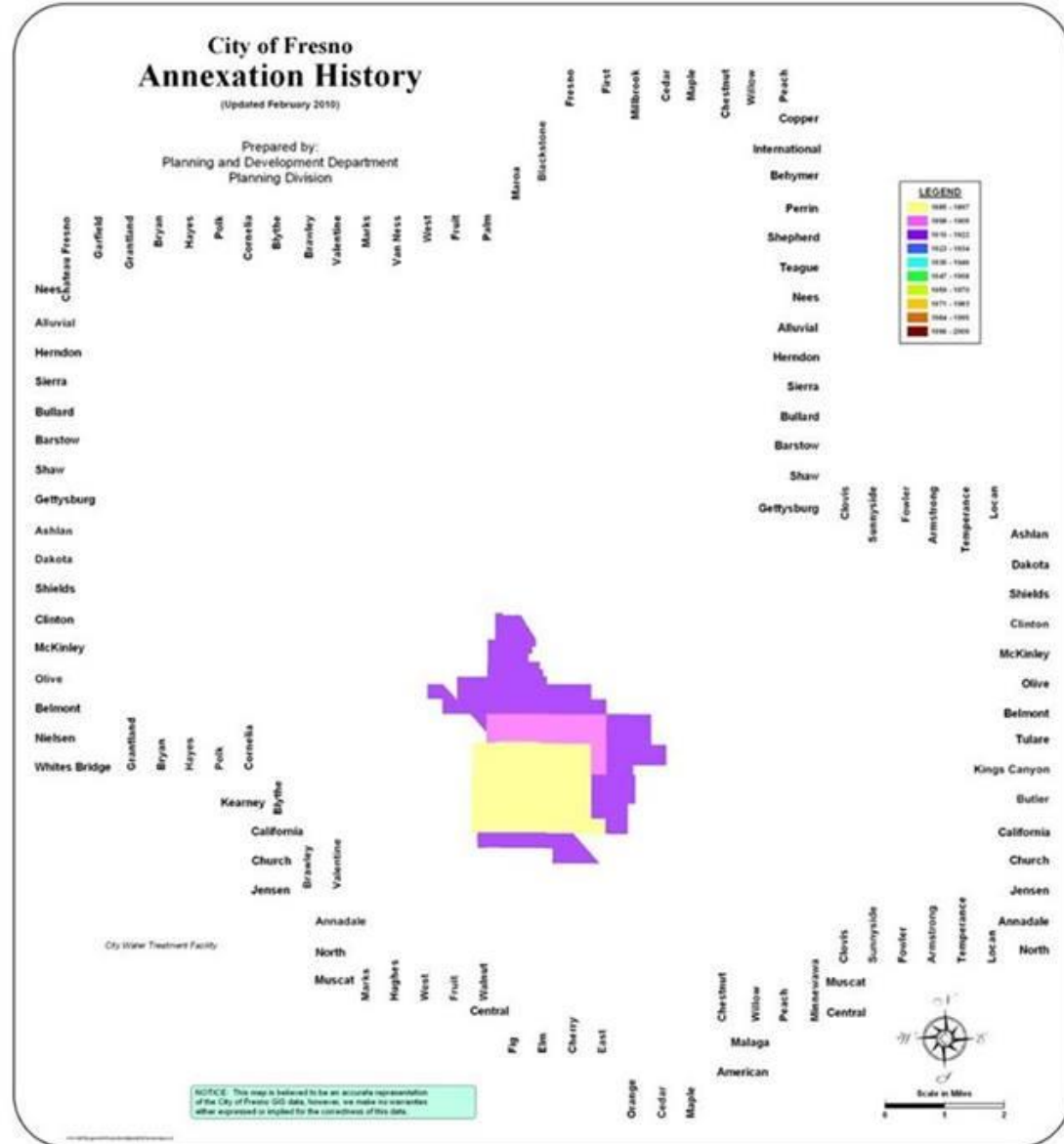
1897



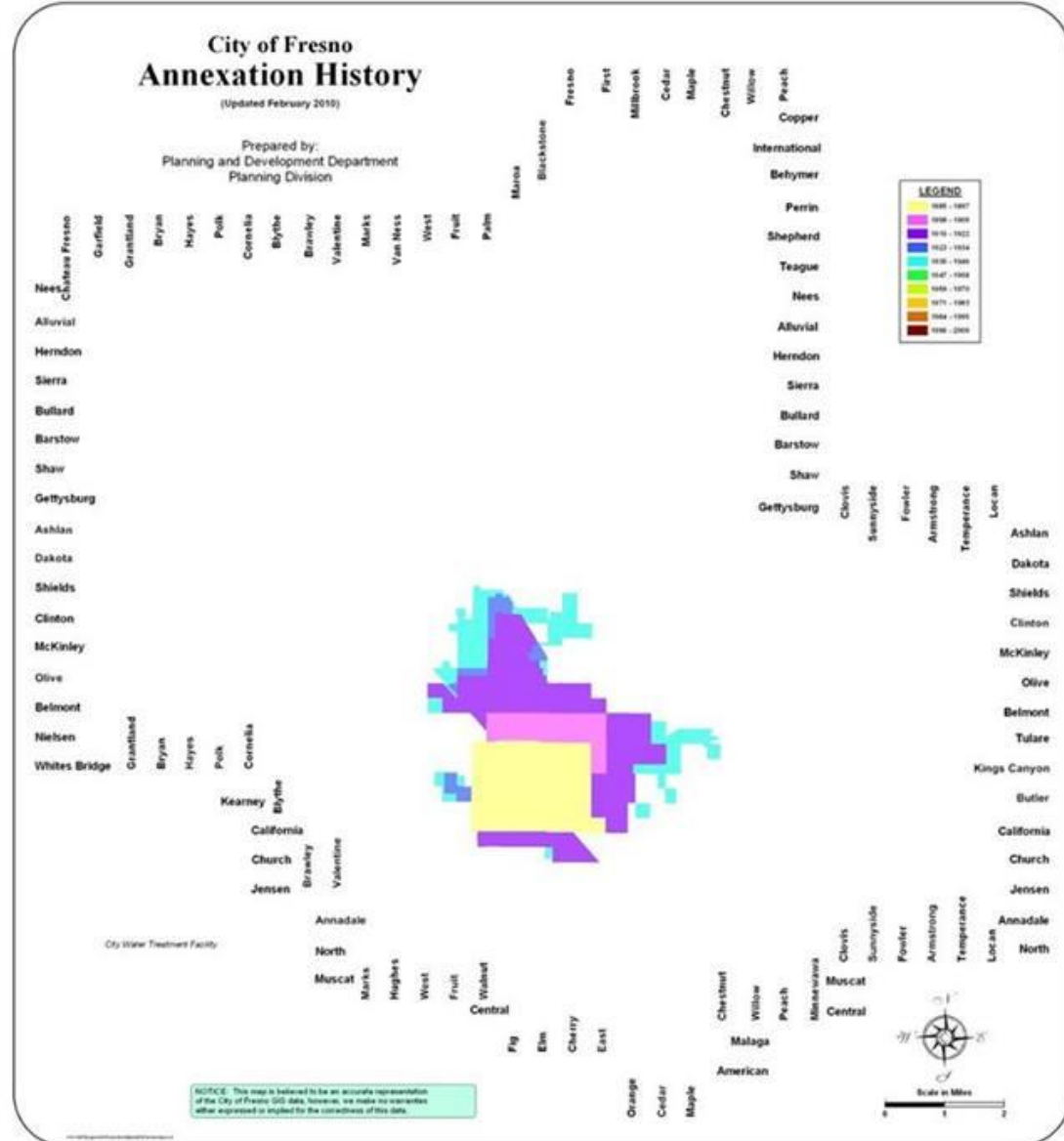
1909



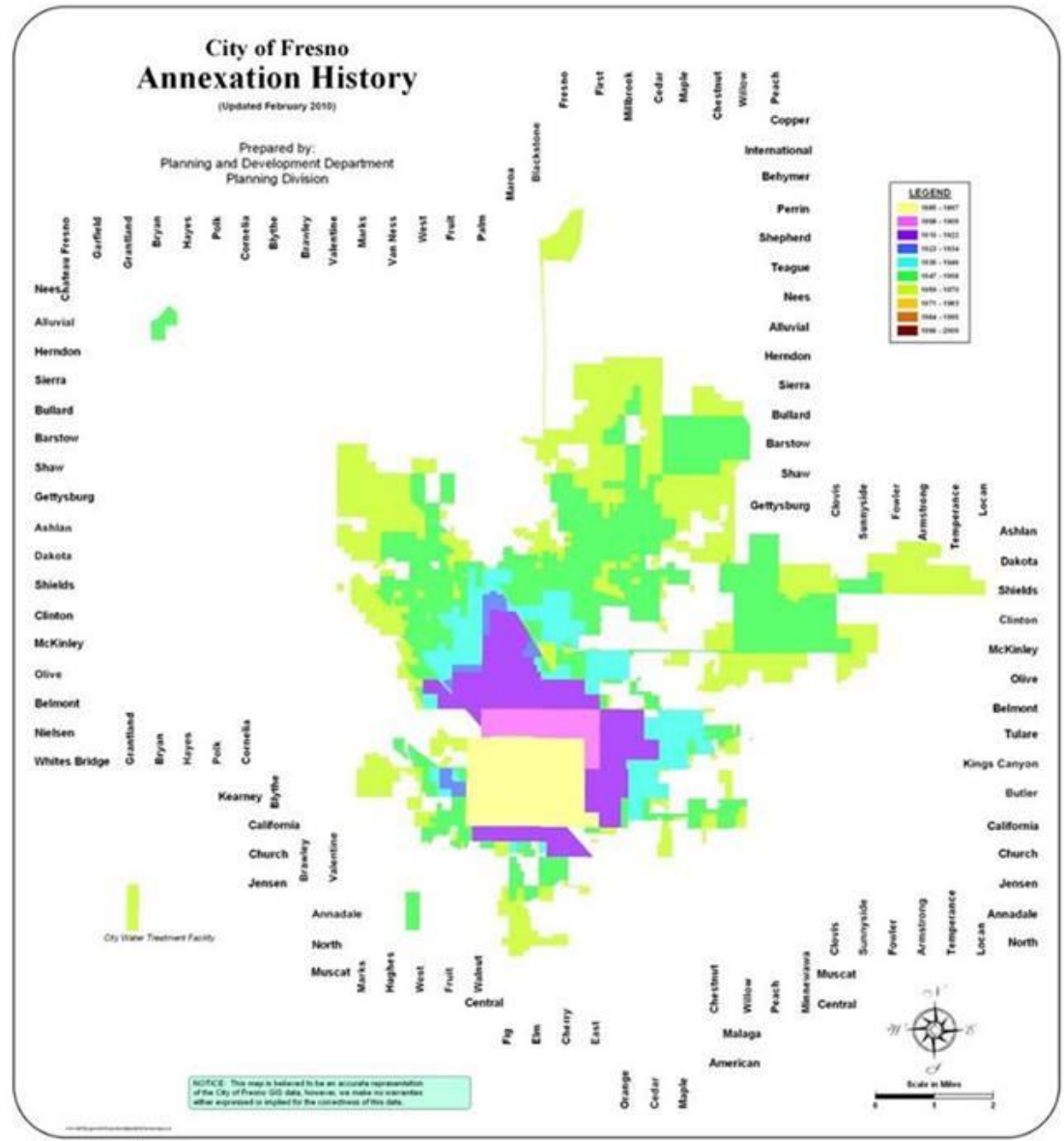
1922



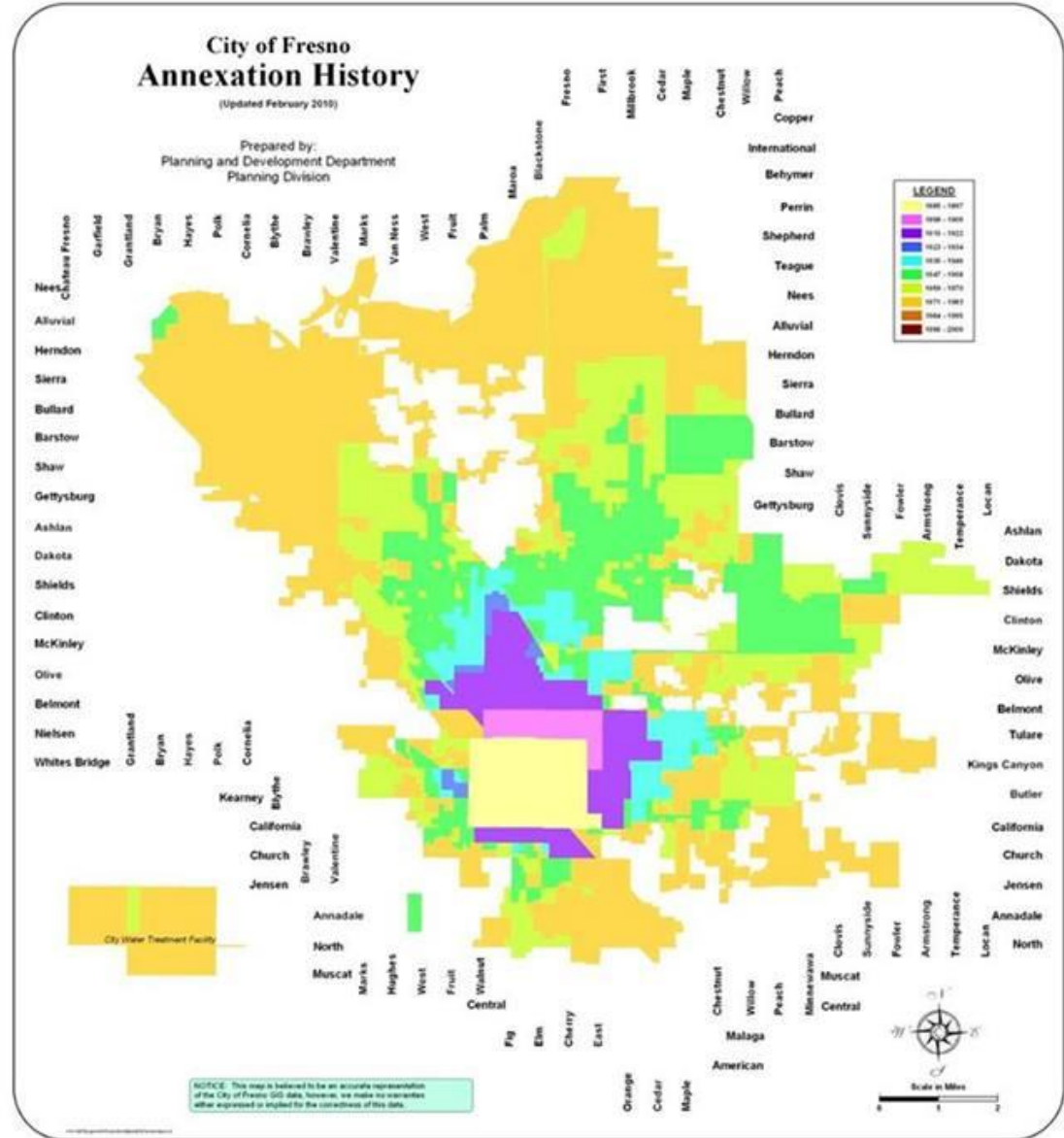
1946



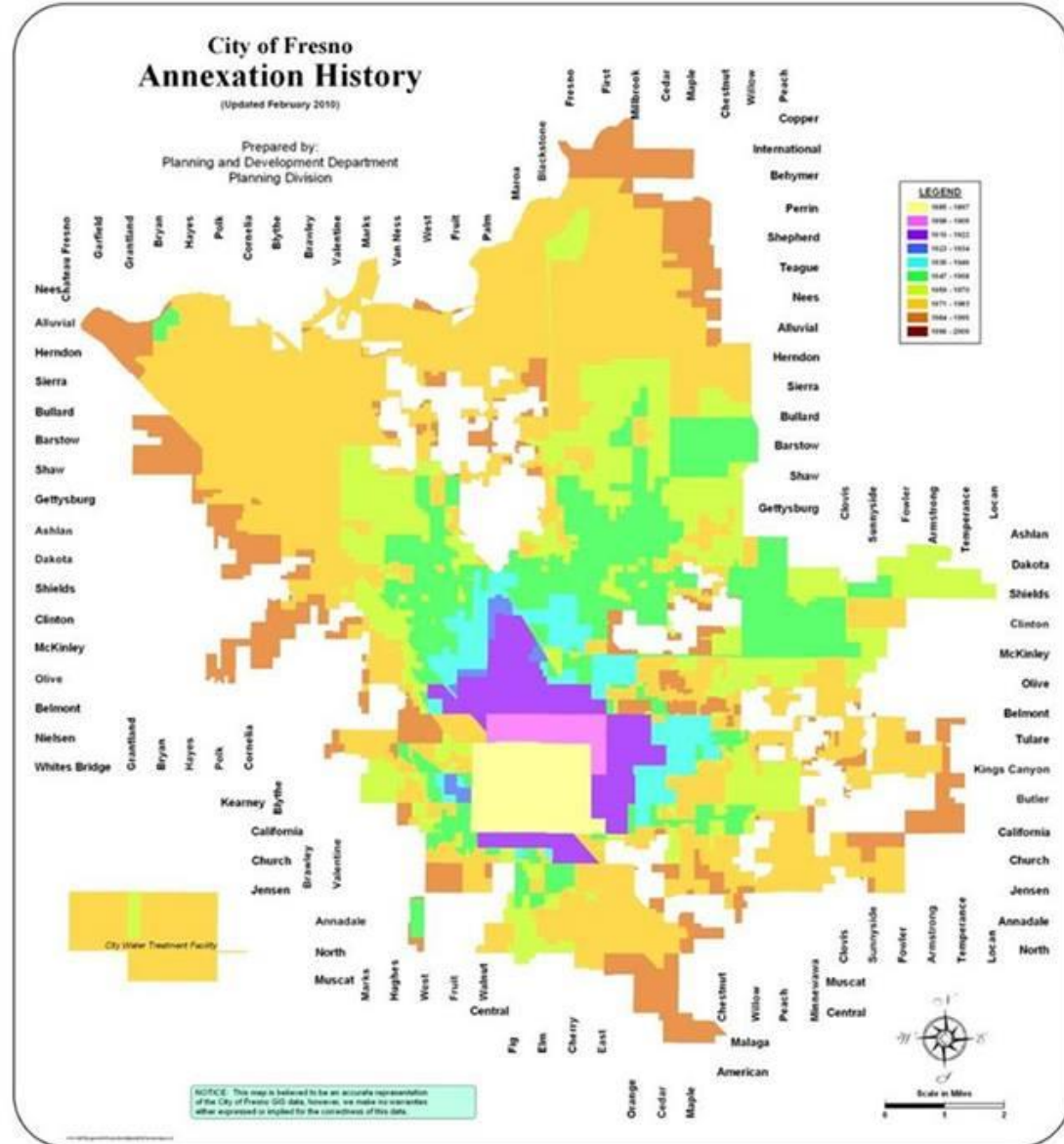
1970



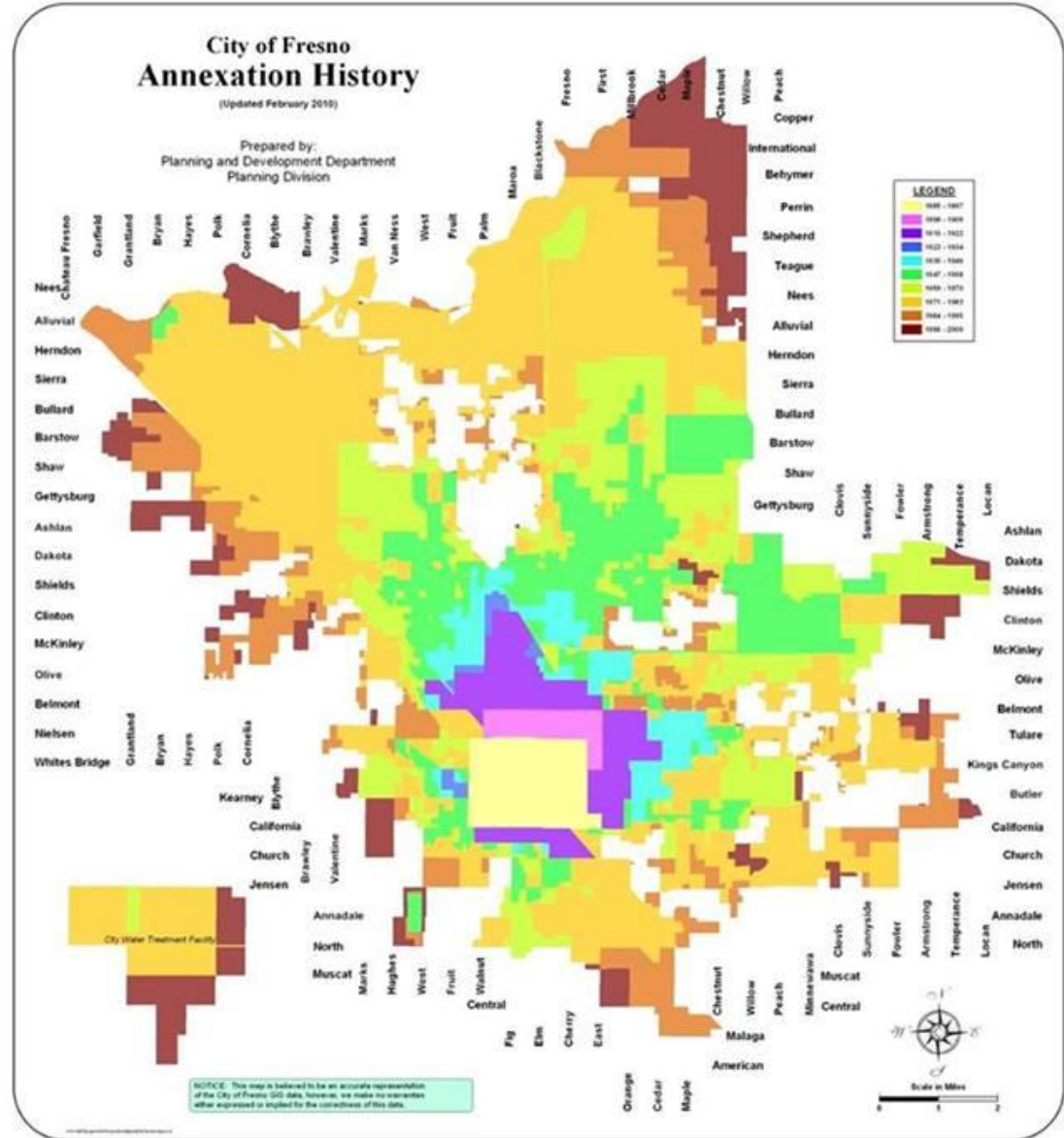
1983



1995



2010





Population

1949
33,500

2015
121,000

Urban3

3.5x



Population



Feet of pipe/person

1949

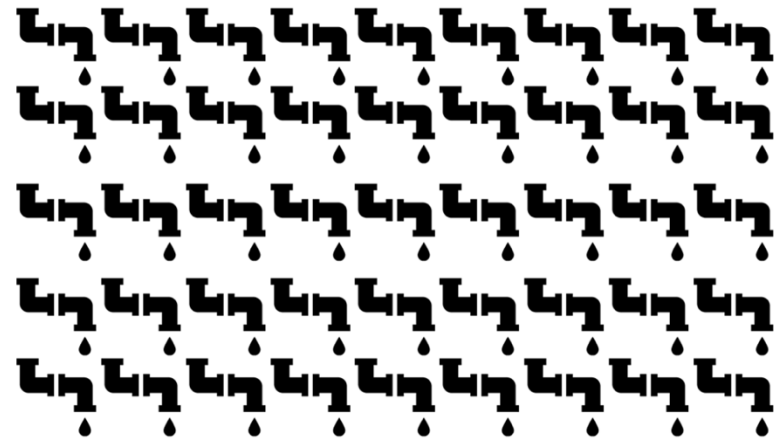
33,500



5

2015

121,000



50

Urban3

3.5x

10x



Population

1949
33,500

2015
121,000

3.5x

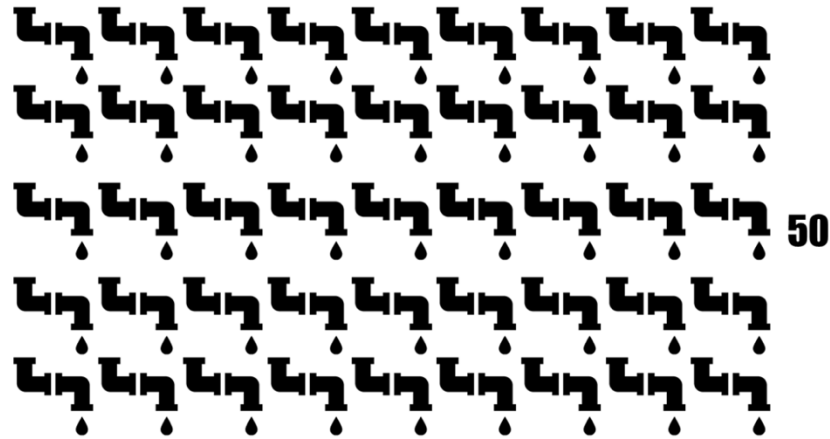
Urban3



Feet of pipe/person



5



50

10x

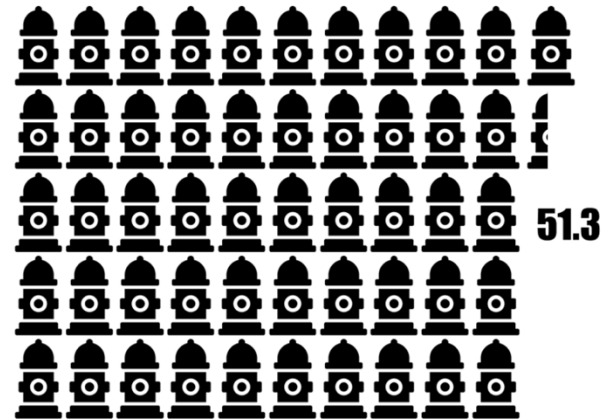


Fire Hydrants/1,000 people

Source: Sanborn Maps and LCG Records



2.4



51.3

21.4x



\$1,104,500

\$618,500



Image Landsat
Image NOAA

Image © 2014 DigitalGlobe

Google earth

301 m

2009

42°53'08.29" N 78°52'34.73" W elev 187 m eye alt 1.07 km



Image Landsat
Image NOAA

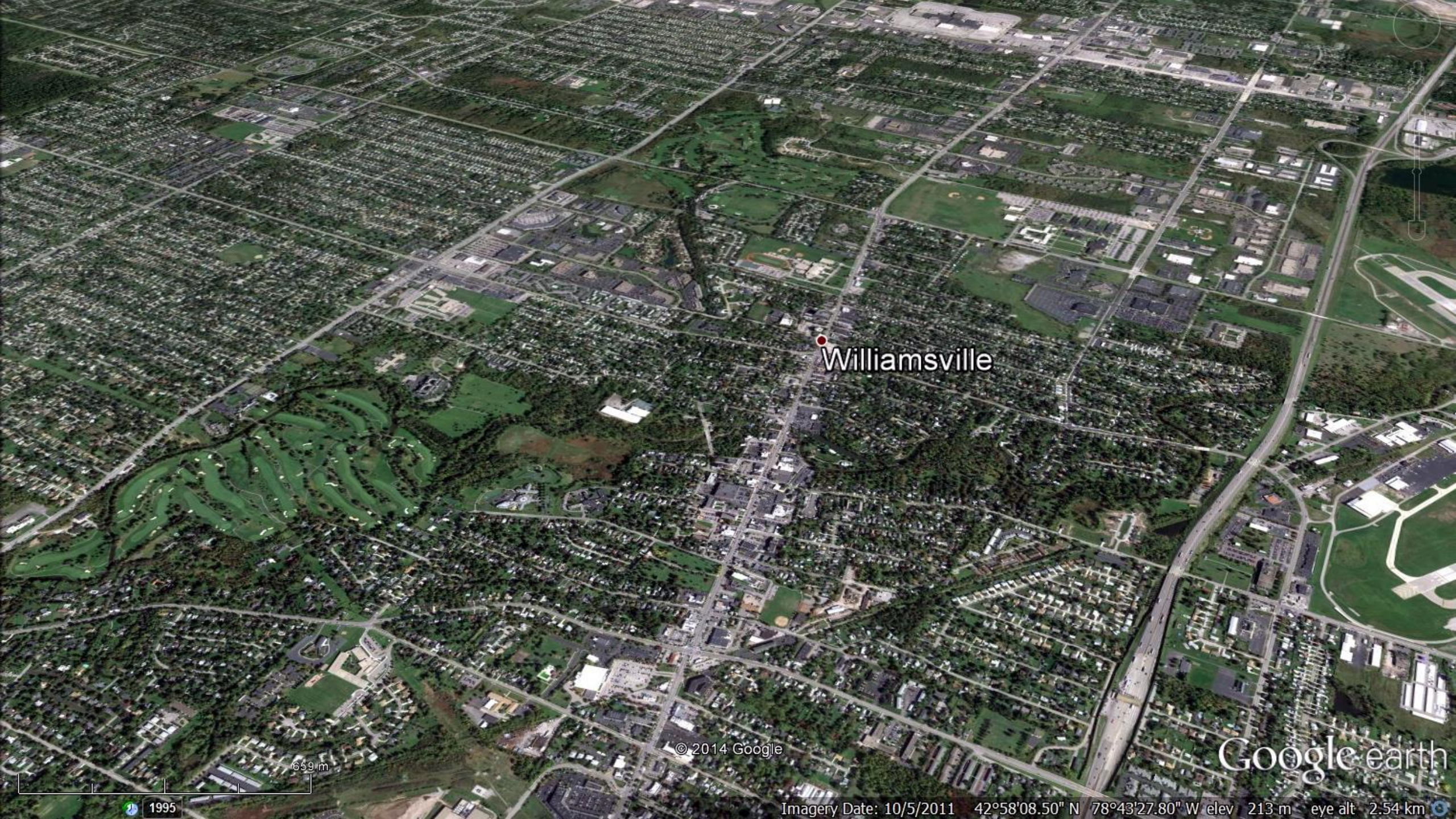
Image © 2014 DigitalGlobe

Google earth

301 m

2009

Imagery Date: 4/9/2013 42°53'10.55" N 78°52'21.80" W elev 191 m eye alt 1.07 km



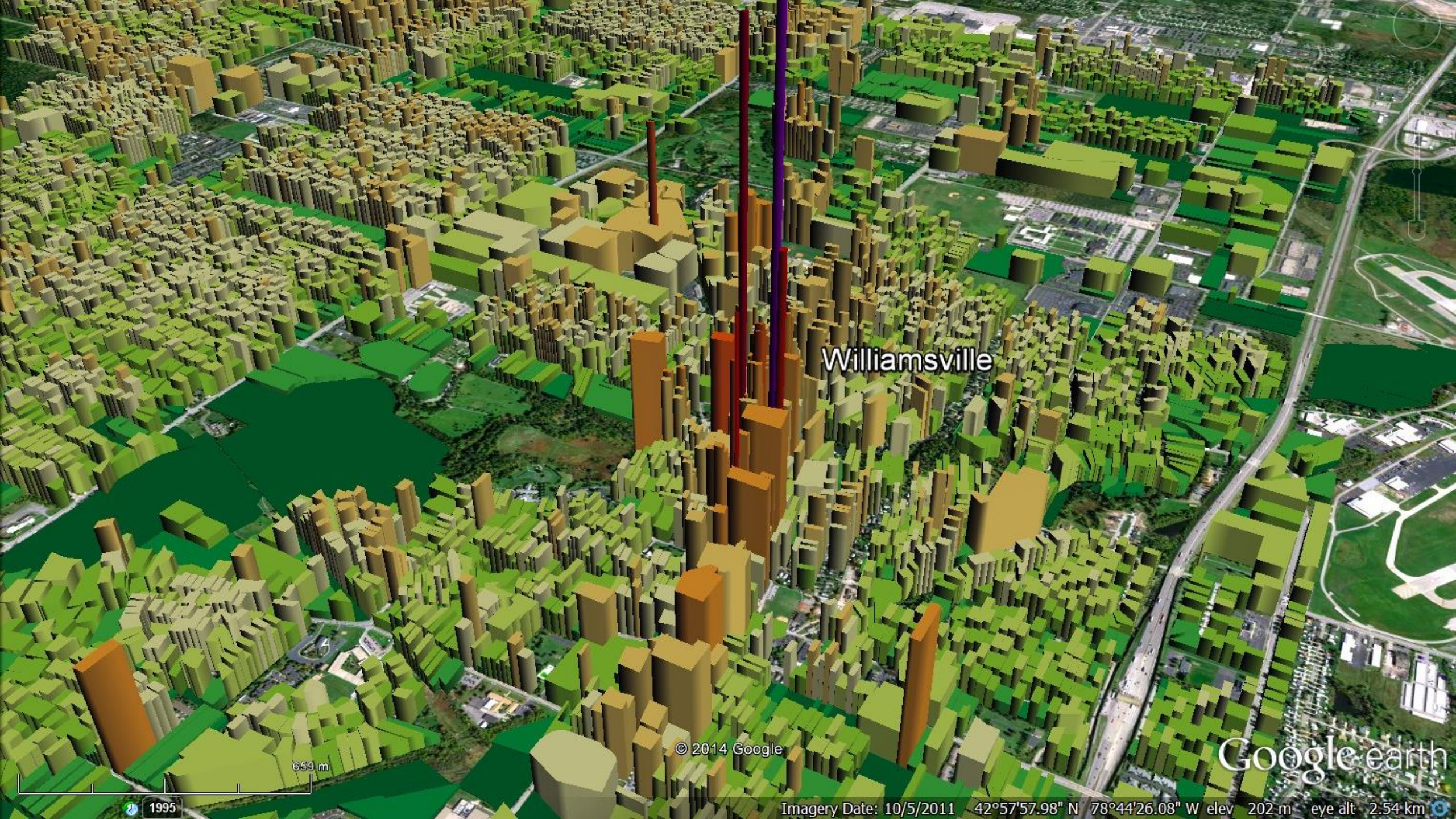
Williamsville

© 2014 Google

Google earth

1995

Imagery Date: 10/5/2011 42°58'08.50" N 78°43'27.80" W elev 213 m eye alt 2.54 km



Williamsville

© 2014 Google

Google earth

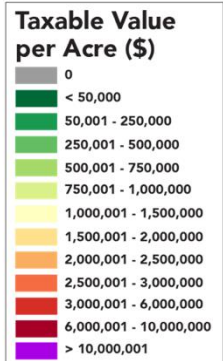
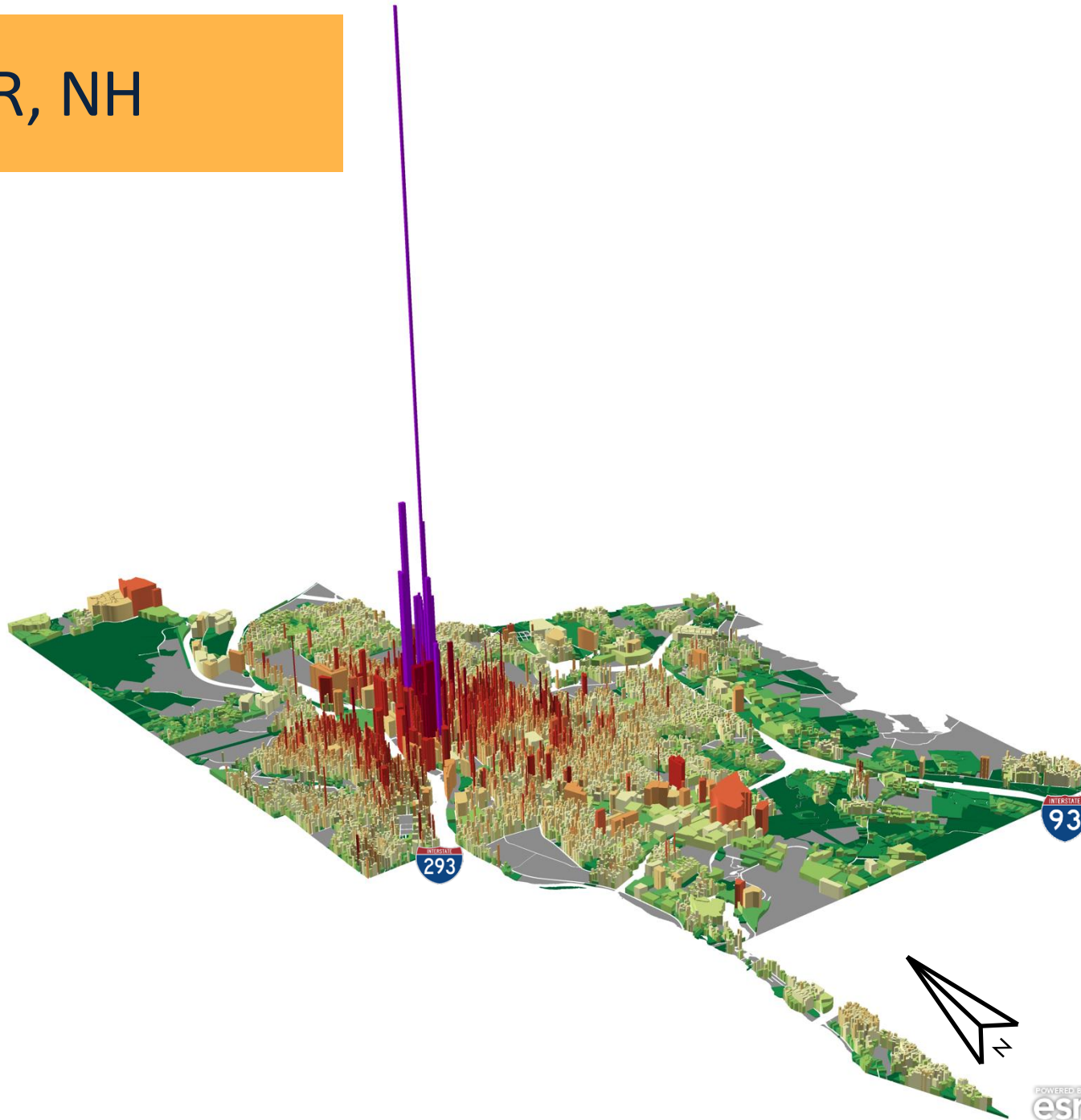
659 m



1995

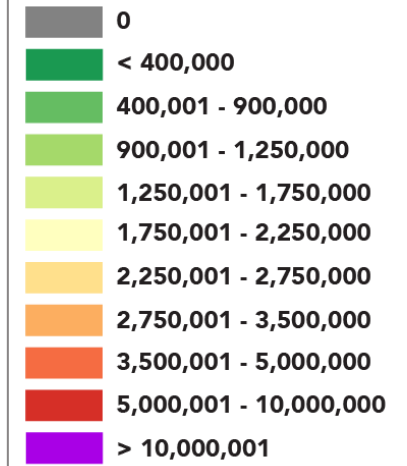
Imagery Date: 10/5/2011 42°57'57.98" N 78°44'26.08" W elev 202 m eye alt 2.54 km

MANCHESTER, NH

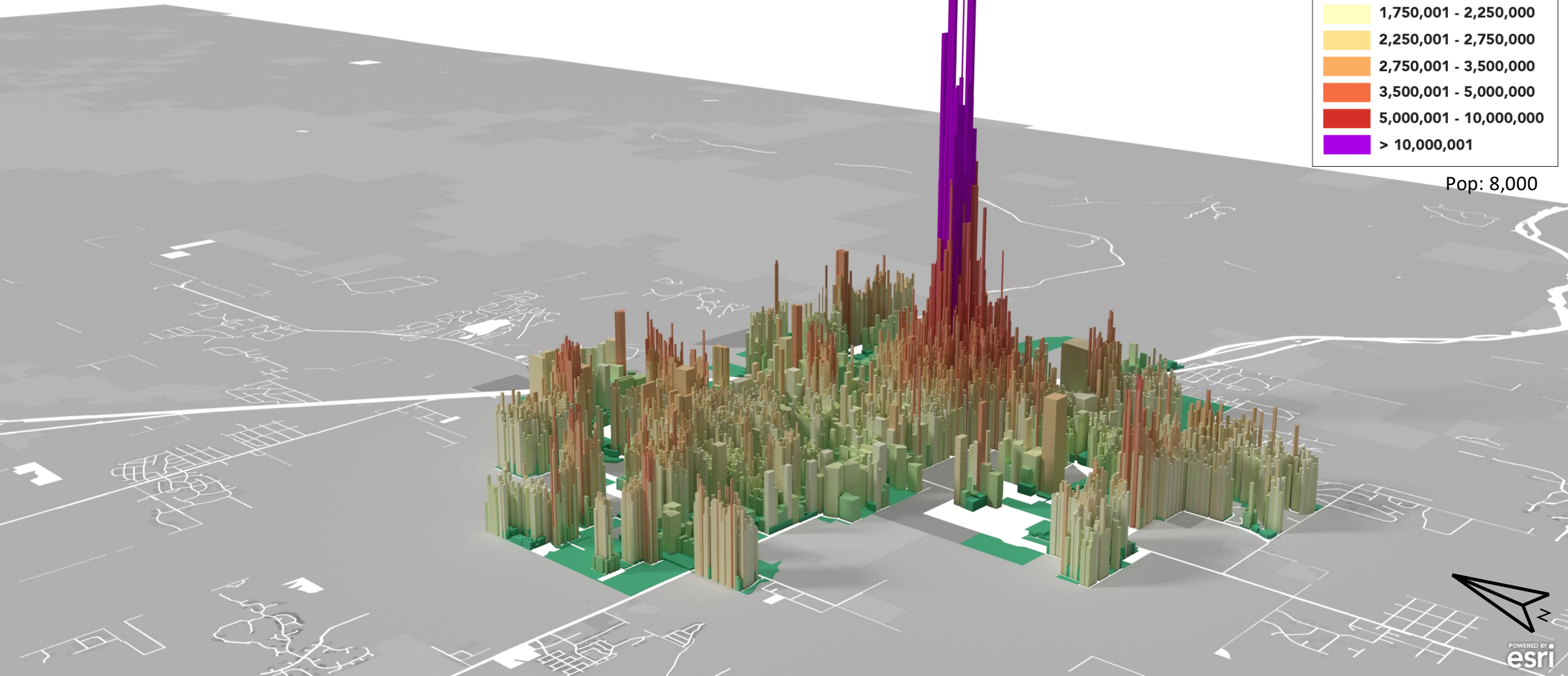


BOZEMAN, MT

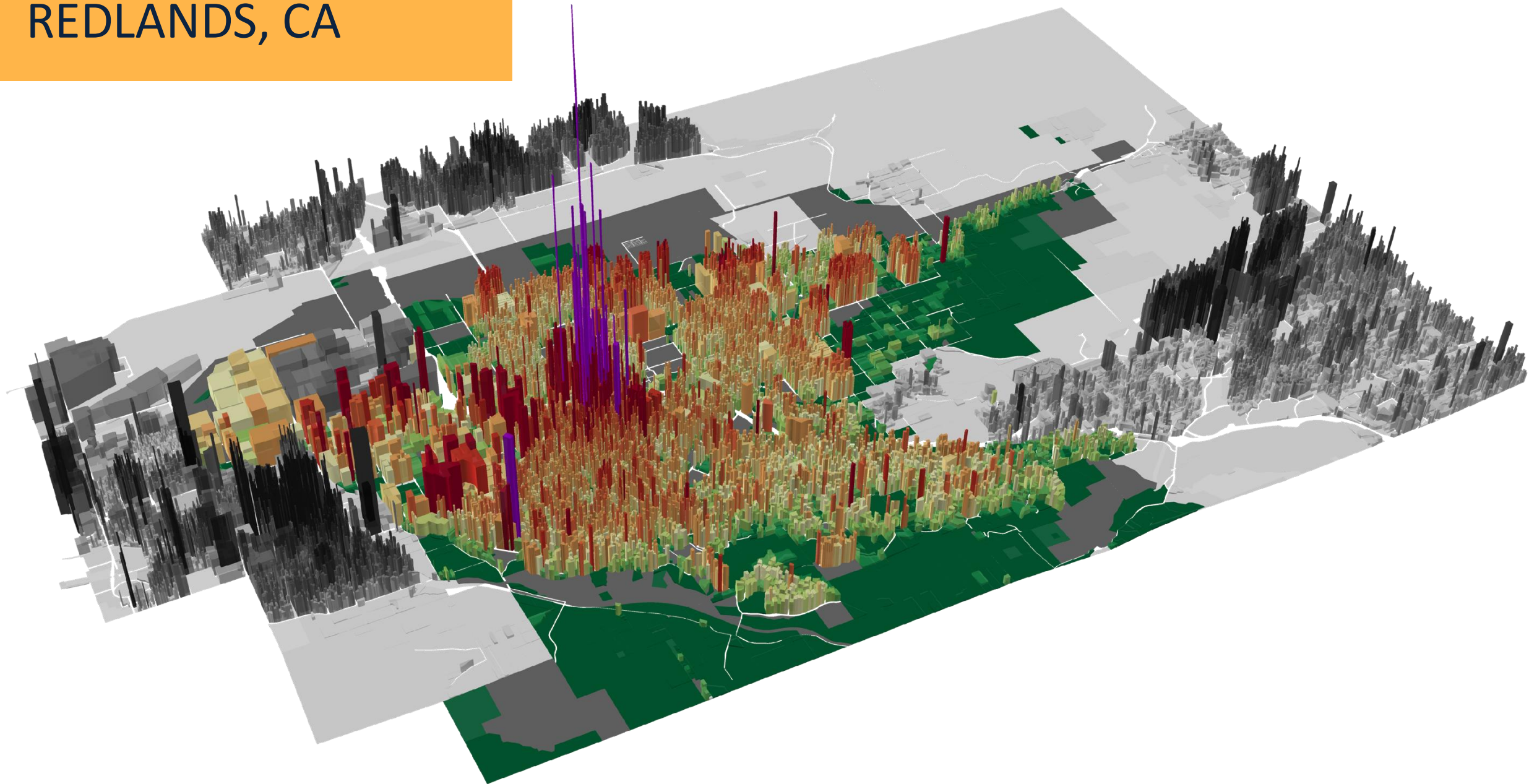
Tax Value Per Acre (\$)



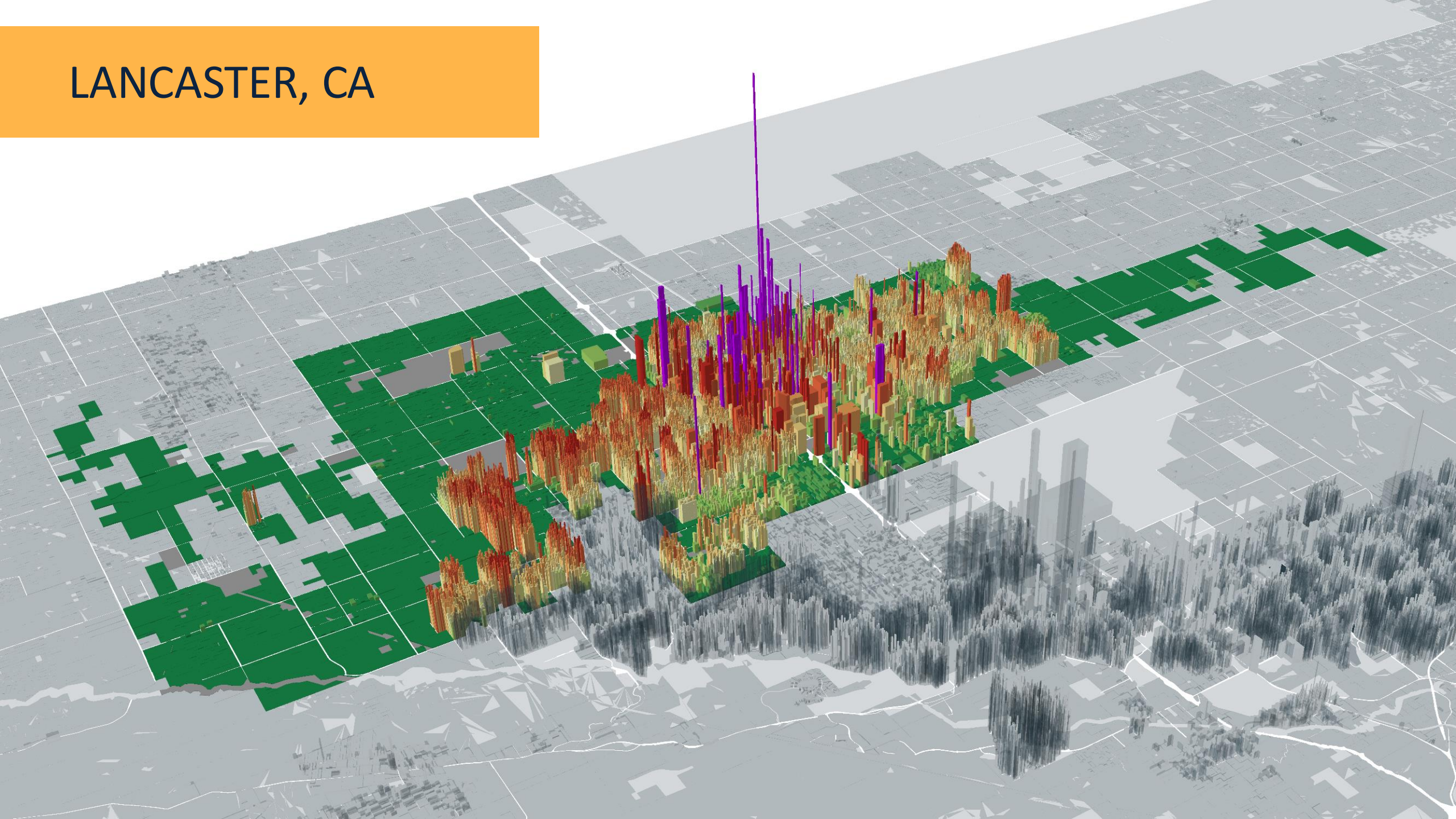
Pop: 8,000



REDLANDS, CA



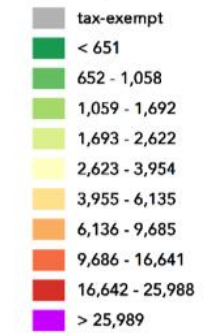
LANCASTER, CA



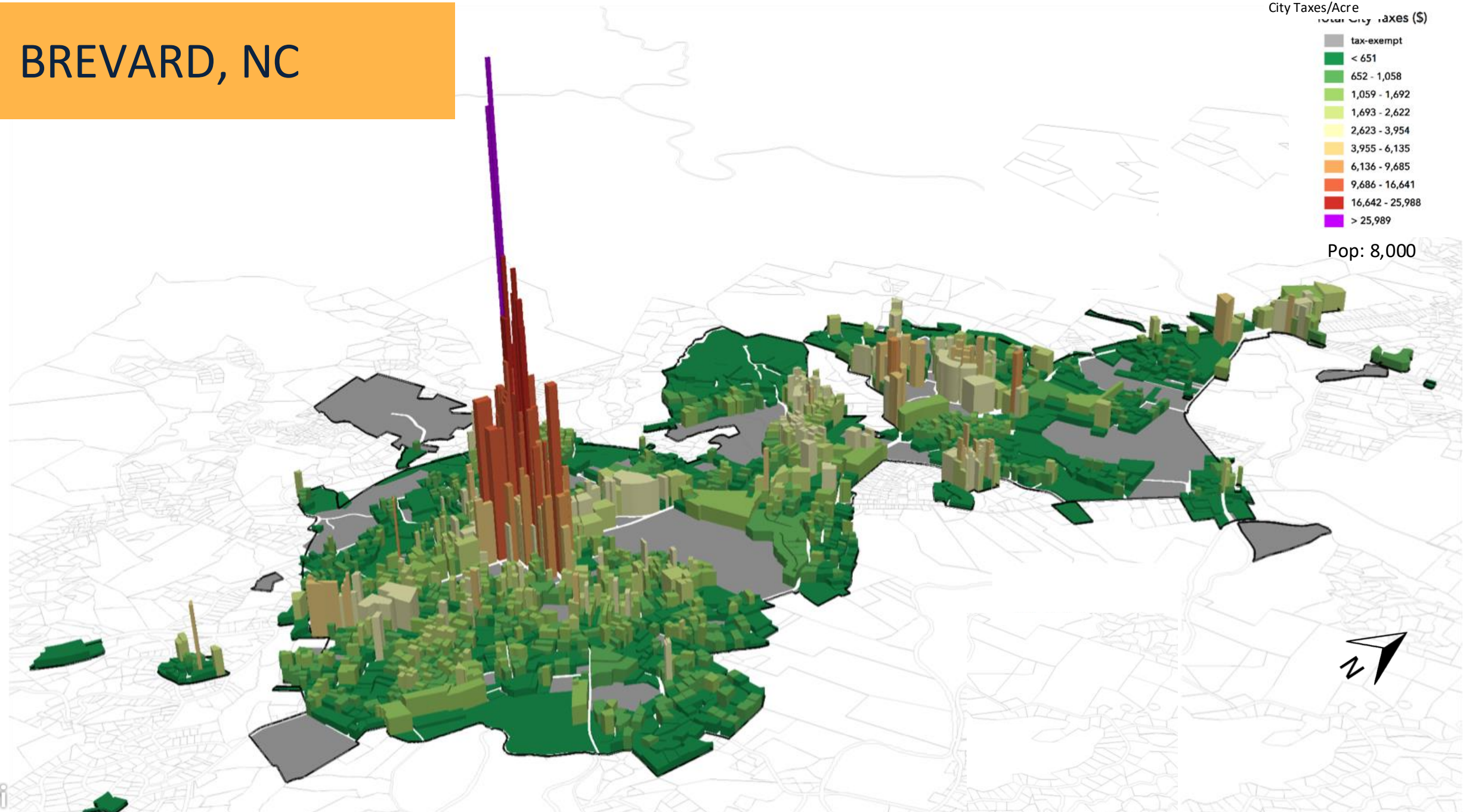
BREVARD, NC

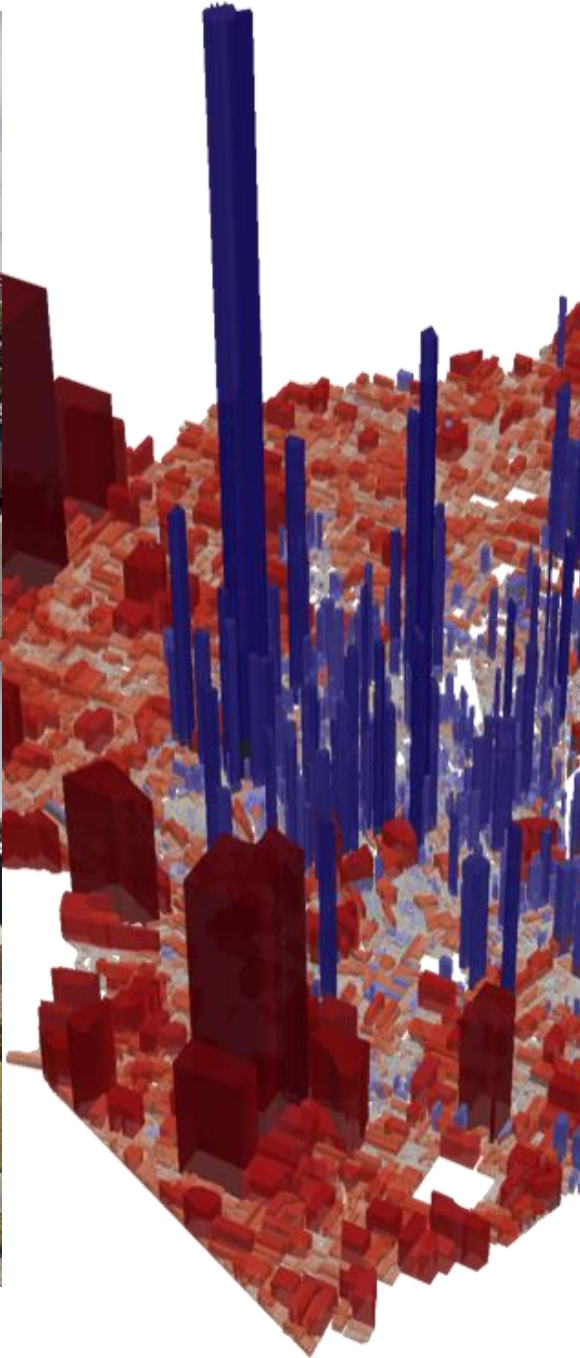
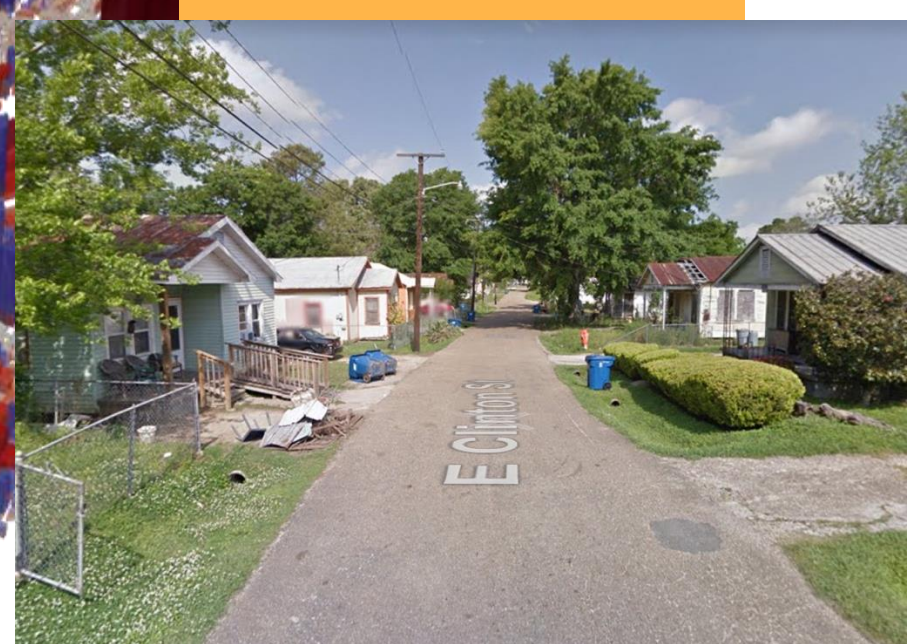
City Taxes/Acre

Total City Taxes (\$)



Pop: 8,000







Maintain a Low Bar of Entry





Michigan's best

MUSKEGON





Respond to how people use the city

Public investment process for a Strong Town



Humbly observe where people in the community struggle.



Ask the question: What is the next smallest thing we can do right now to address that struggle?



Do that thing. Do it right now.

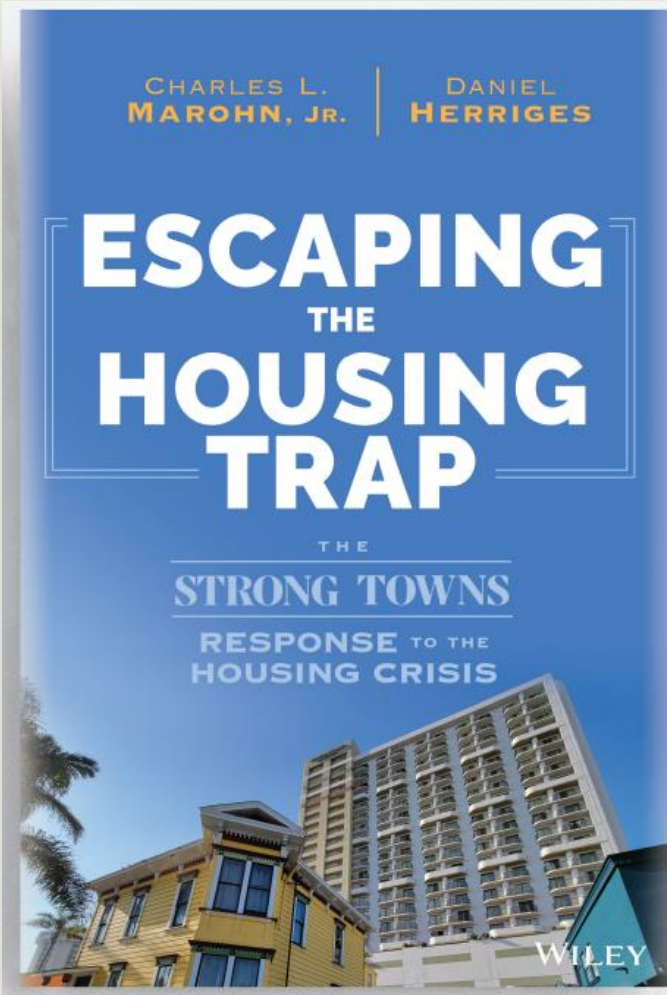
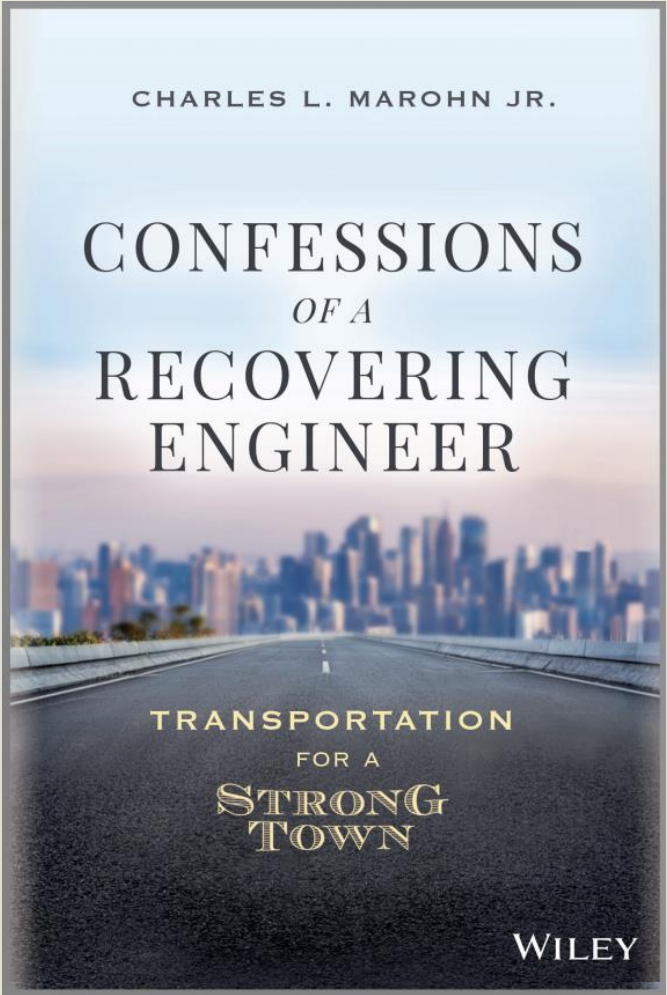
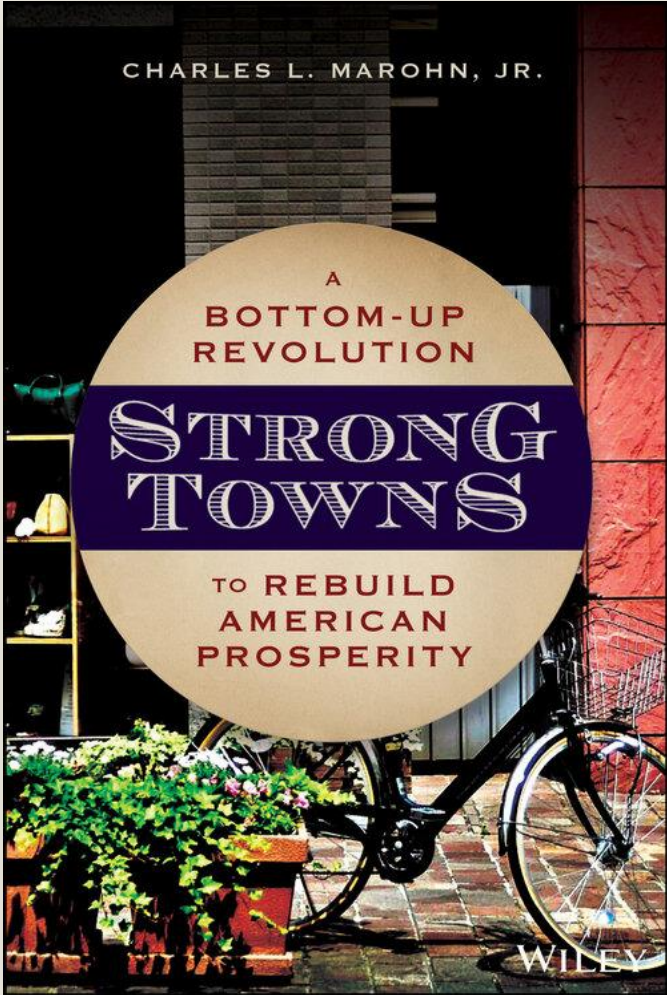


Repeat.





More from Strong Towns...



A man in a dark suit and tie is lying face down on a paved road, positioned over a yellow center line. The background shows a commercial area with buildings and streetlights under a dark sky. The overall image has a somber and desaturated tone.

www.strongtowns.org

A Bottom-Up Revolution to Rebuild American
Community Prosperity